

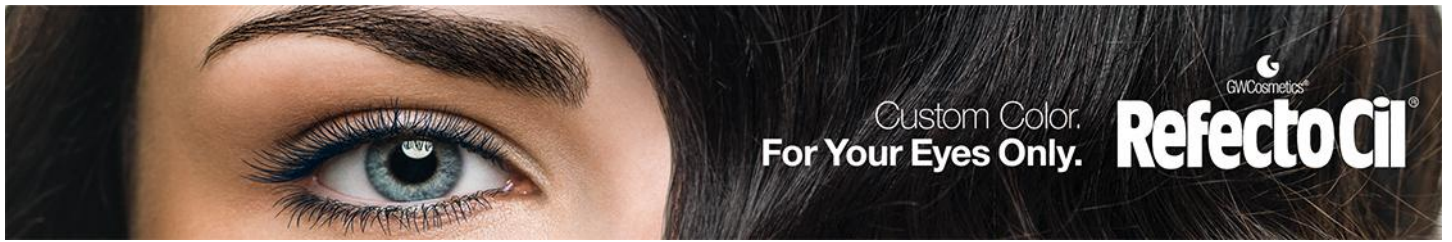
## RefectoCil LongLash Gel

### Intensive treatment for eyelashes and eyebrows with Vitamin E and D-panthenol

**RefectoCil LongLash Gel** is a nurturing conditioner resulting in shiny, long, strong and healthy eyelashes and eyebrows. The new composition is gel-based and contains high-quality ingredients such as Vitamin E, D-panthenol and Glycerin. Those provide long-lasting moisture and intensively nourish and protect eyelashes and eyebrows tinted with RefectoCil. The use of **RefectoCil LongLash Gel** prevents dry and brittle eyelashes and eyebrows and helps to preserve their full natural length.

Healthy eyelashes and eyebrows are crucial for an ideal tinting result. The RefectoCil tint is more intensive and long-lasting on healthy hairs. Therefore recommend your customers the new **RefectoCil LongLash Gel** for daily use!





Application: nightly after removal of make up, simply apply with brush applicator from roots to tips of eyelashes and eyebrows. The intensive new high quality ingredients will nourish during the night. **RefectoCil Longlash Gel** can also be used during the day for shaping eyebrows, plus adding gloss and shine to eyelashes for a healthy glowing look.

Content: 7 ml. Enough for about 250 applications.

With the multi-functional **shelf-display** the perfect presentation of the **RefectoCil Longlash Gel** is guaranteed.

Display suitable for:

- 39 x RefectoCil Longlash Gel + 1 Probe
- Poster

24 pieces of customer leaflets which can be place on the right-hand side of the display in the small dispenser can be provided on request.

Outer format: 250x245mm, 30mm high  
 Format Poster-Bag: 210x310  
 Material: Polystyrol 3mm  
 Colour: Black shining

Supporting Material:

- Product information sheet
- Folder Collection 058532
- Folder Blonde Brow
- Folder Eyebrow & Eyelash tint 058332
- Print Ad Range
- Display

